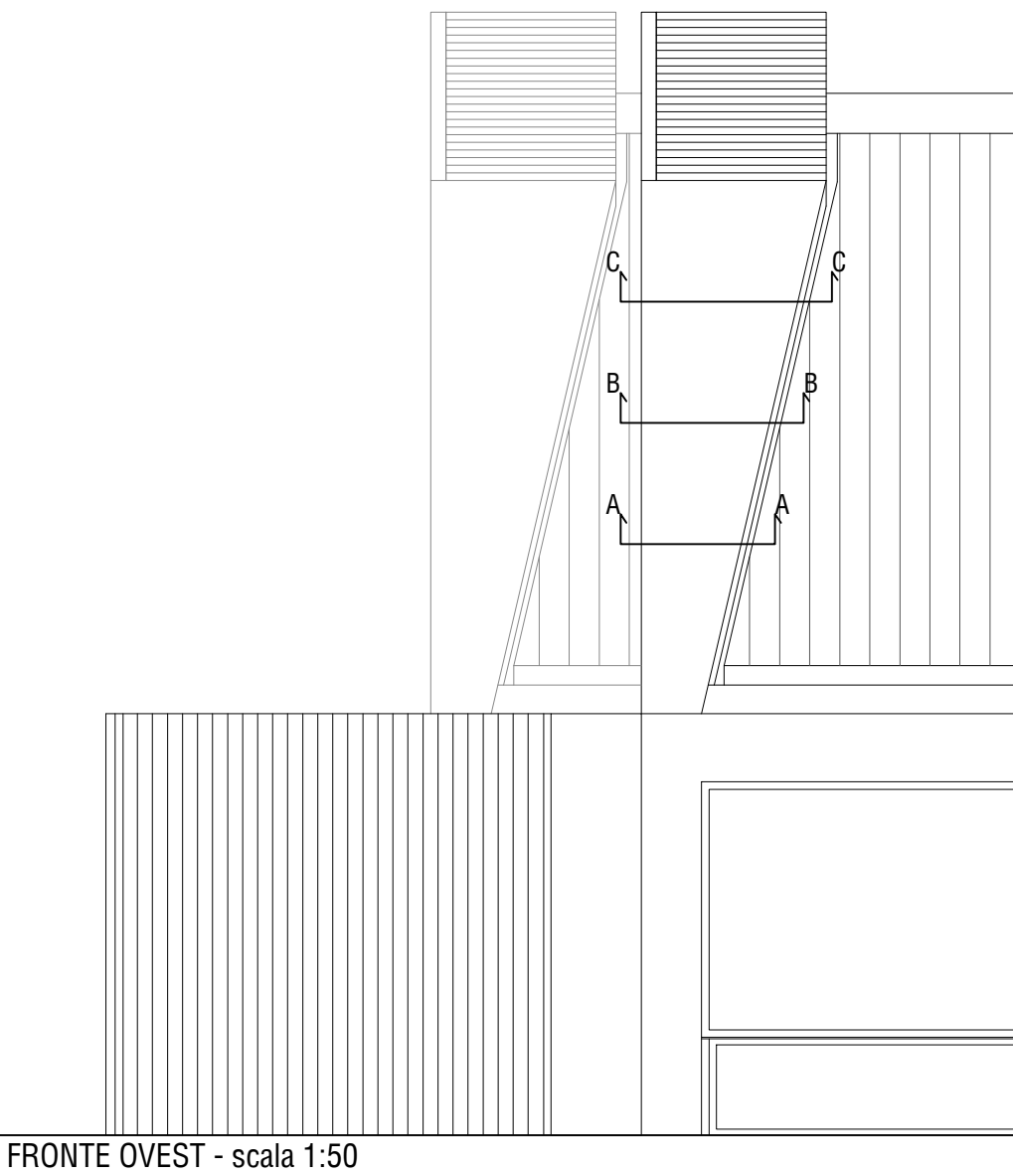
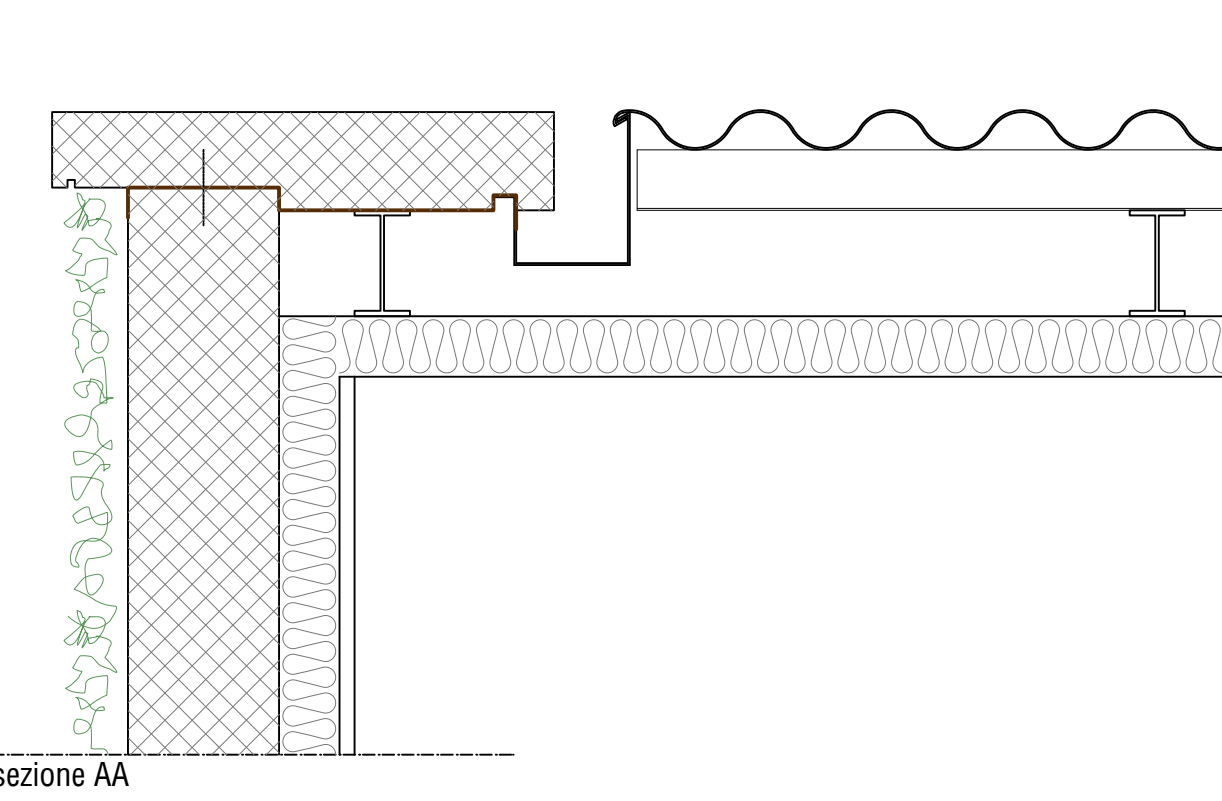
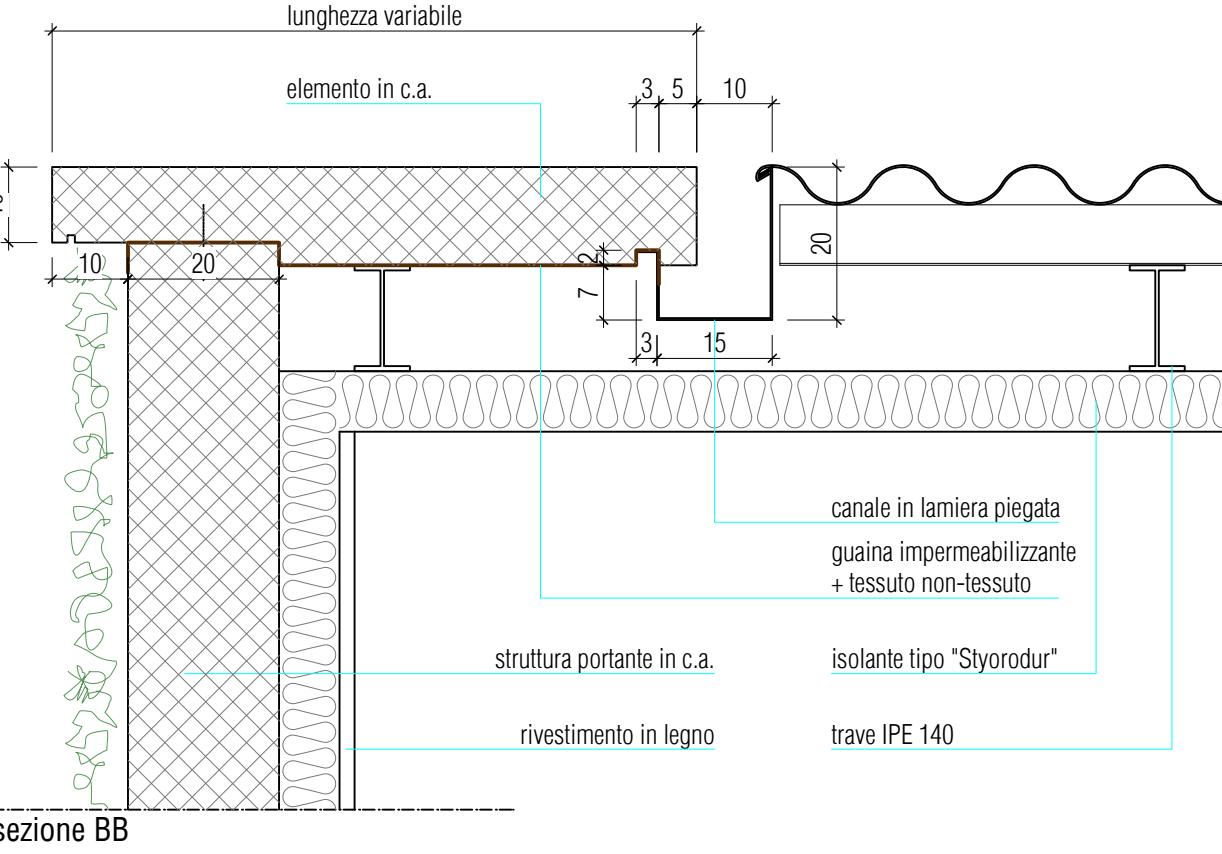
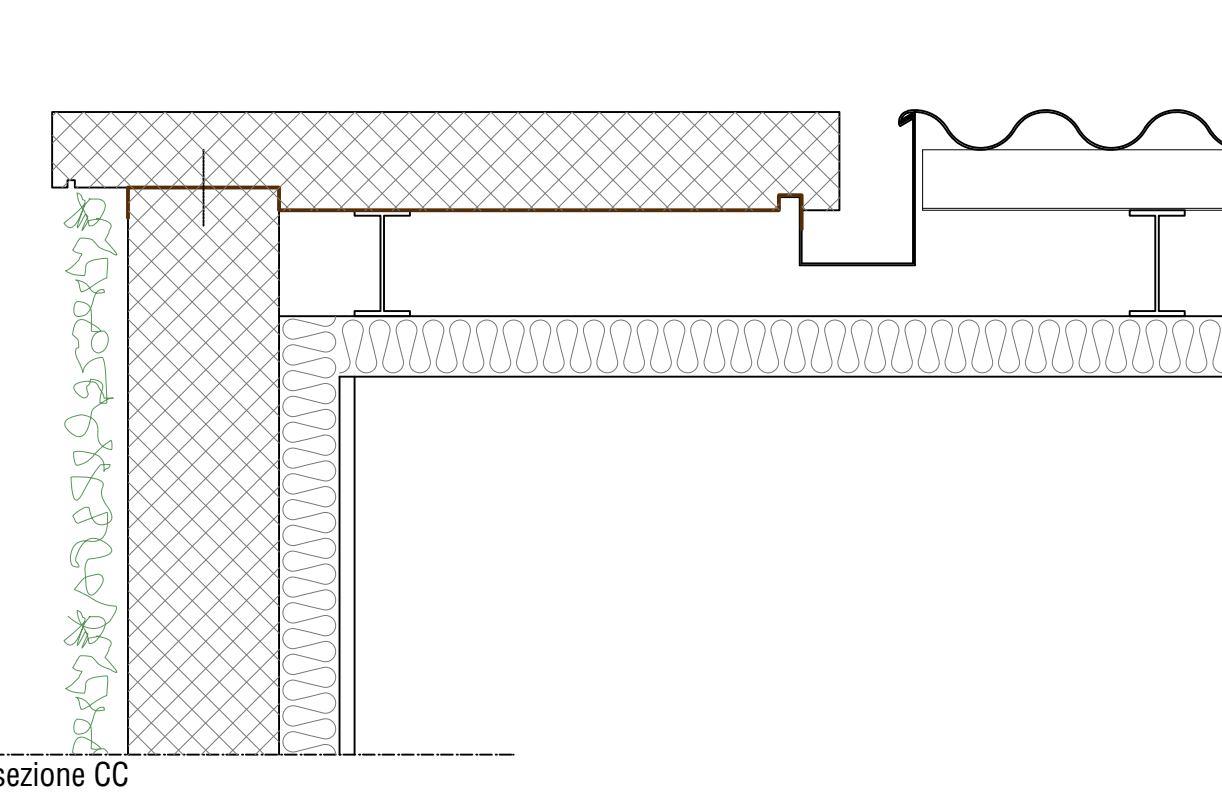
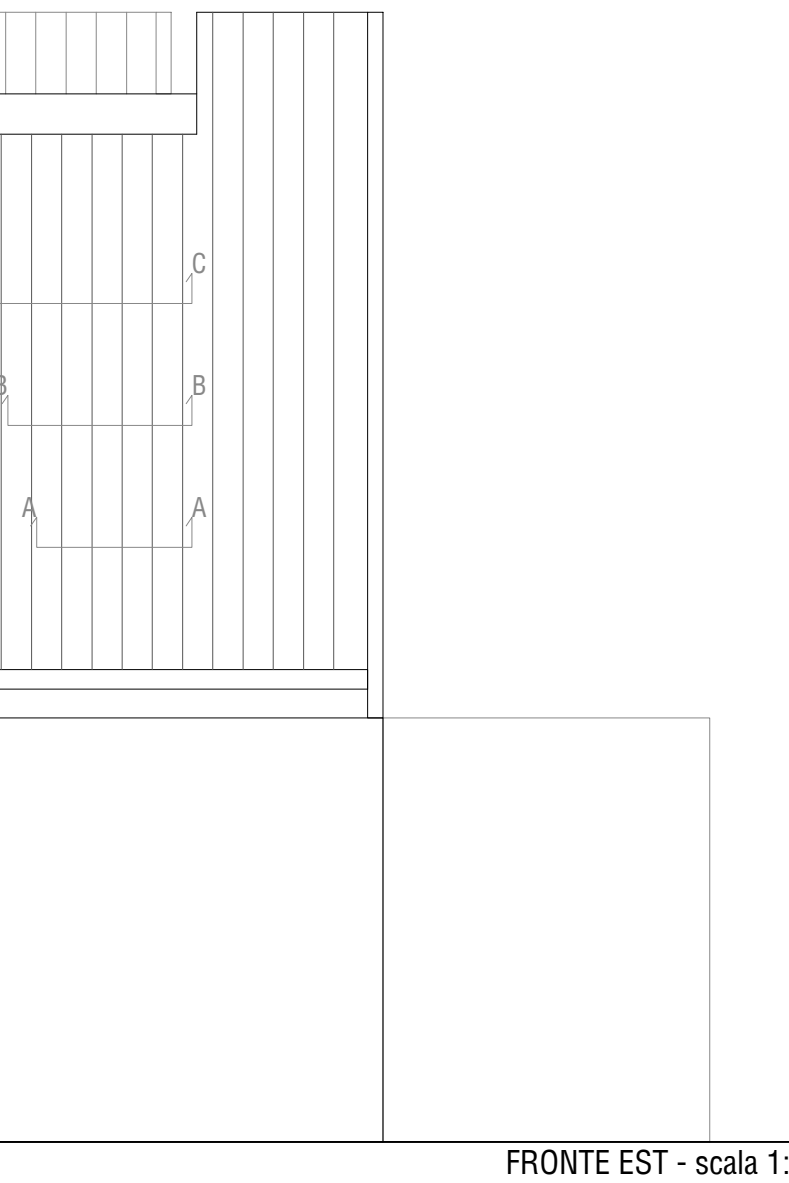
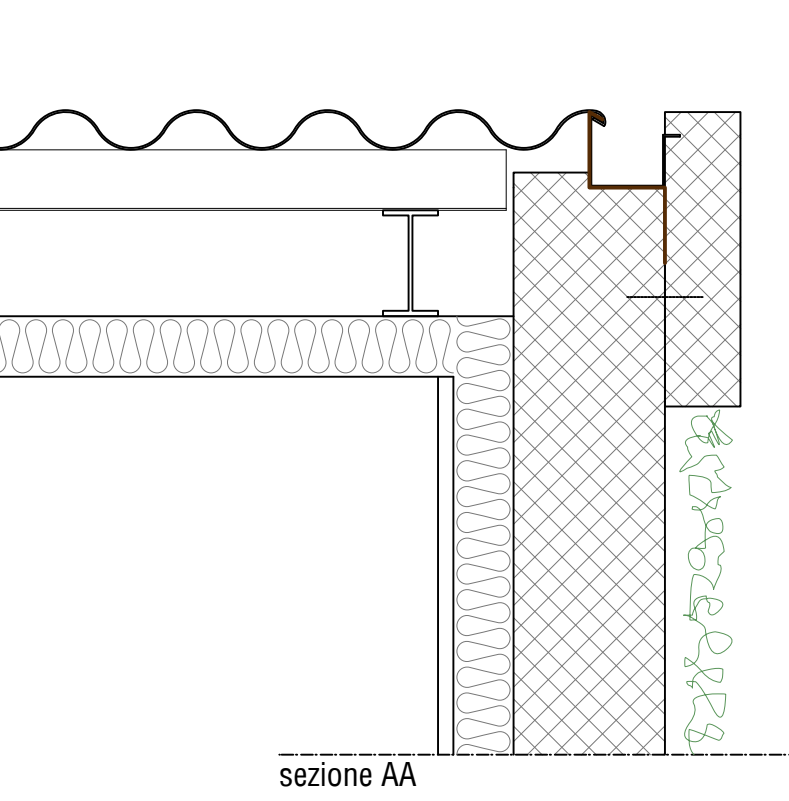
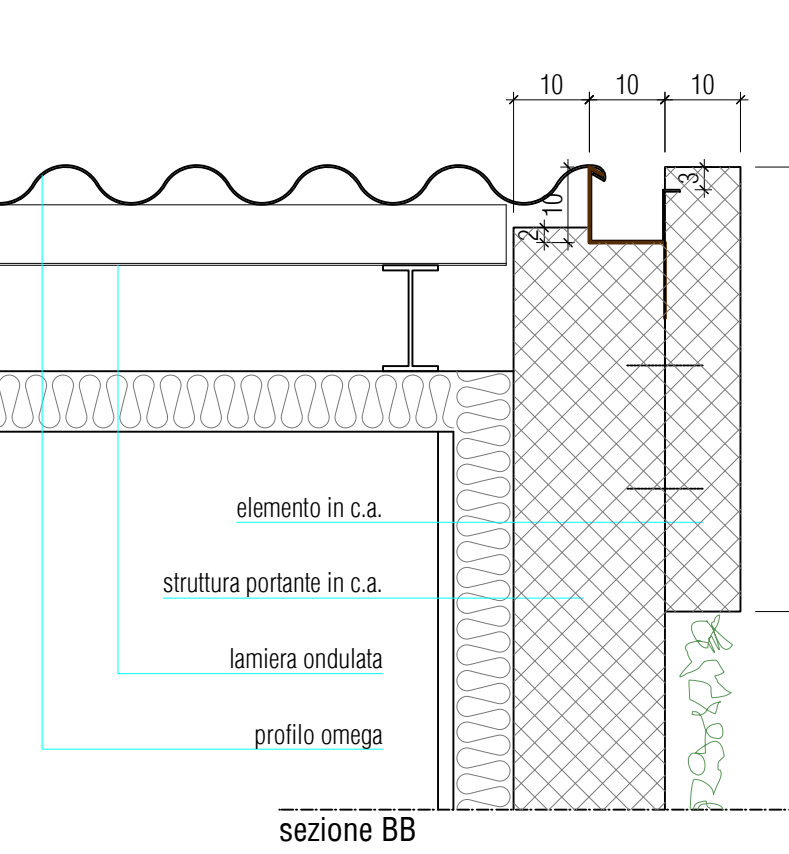
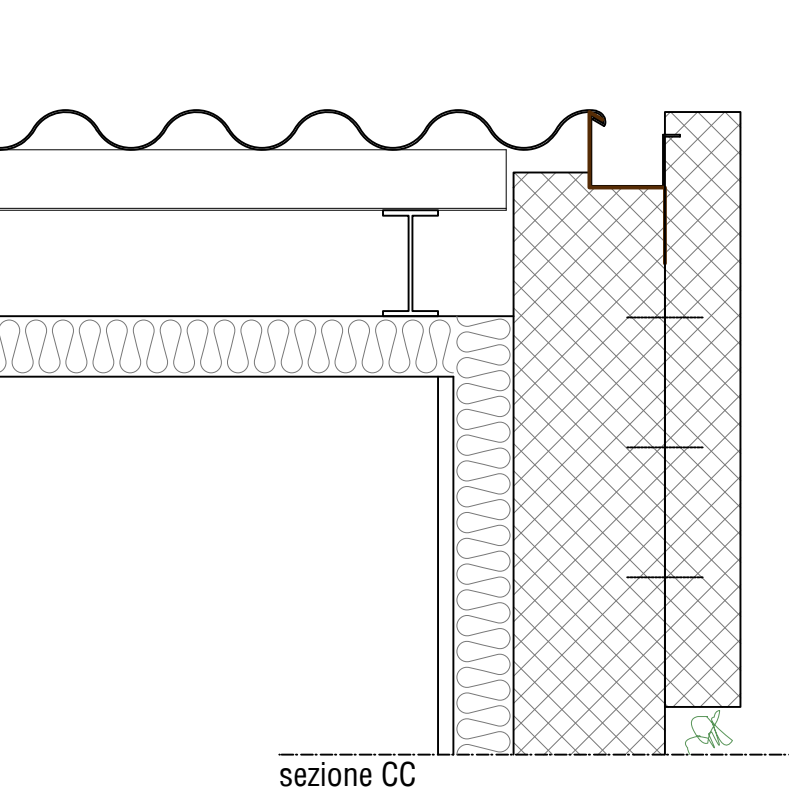


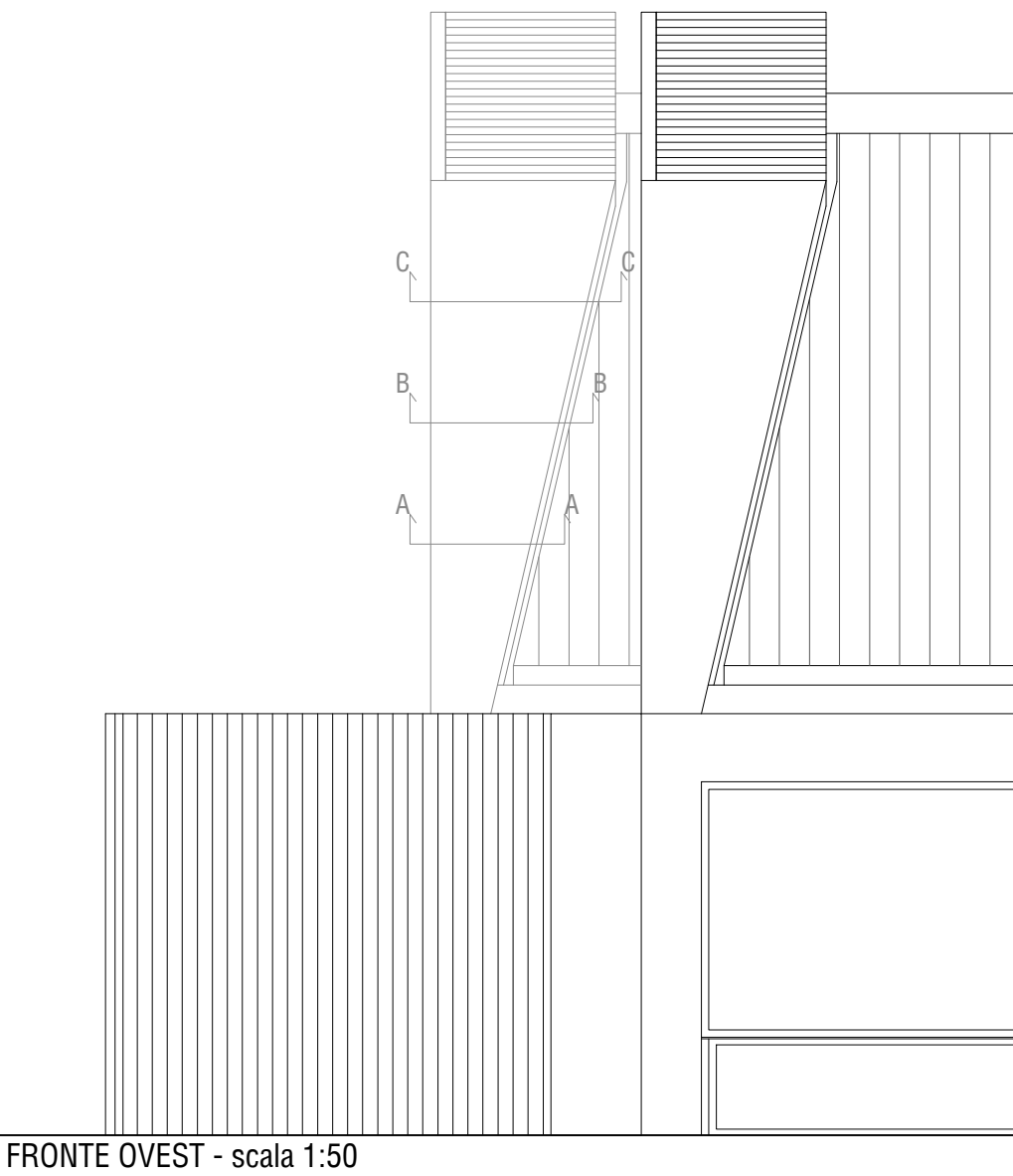
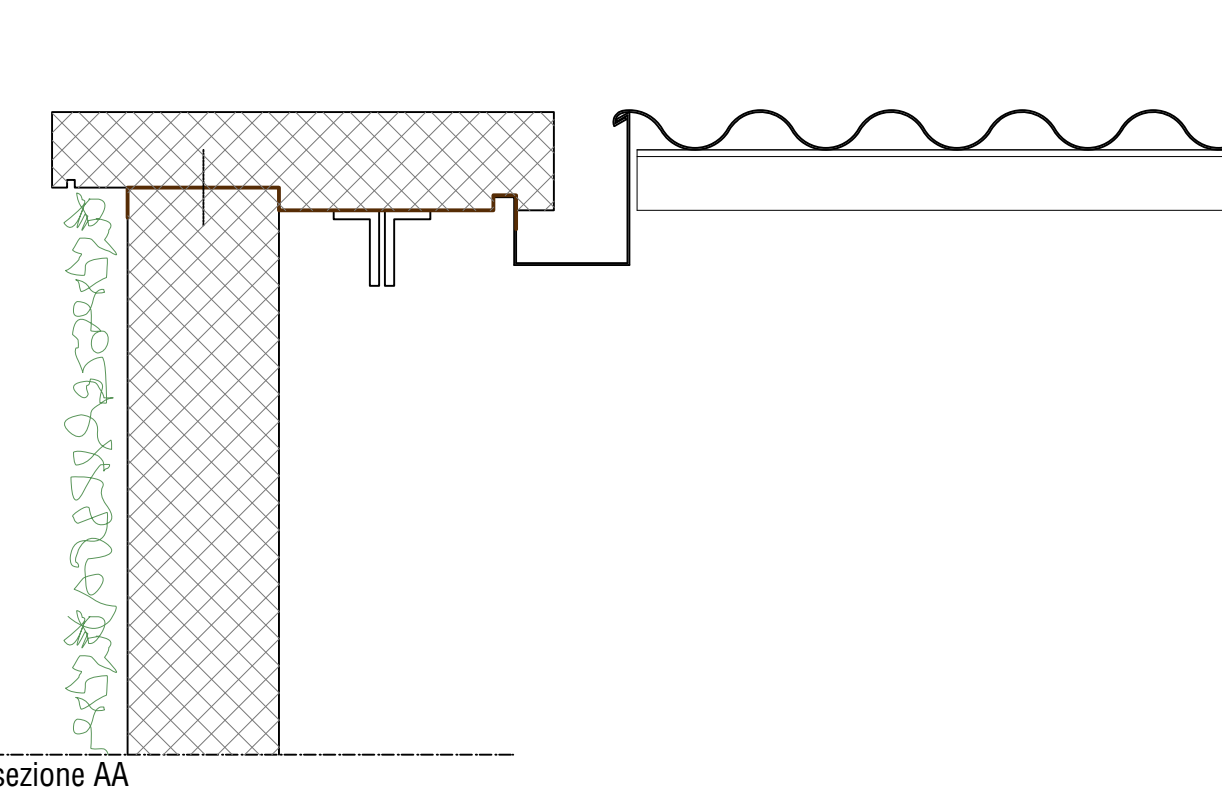
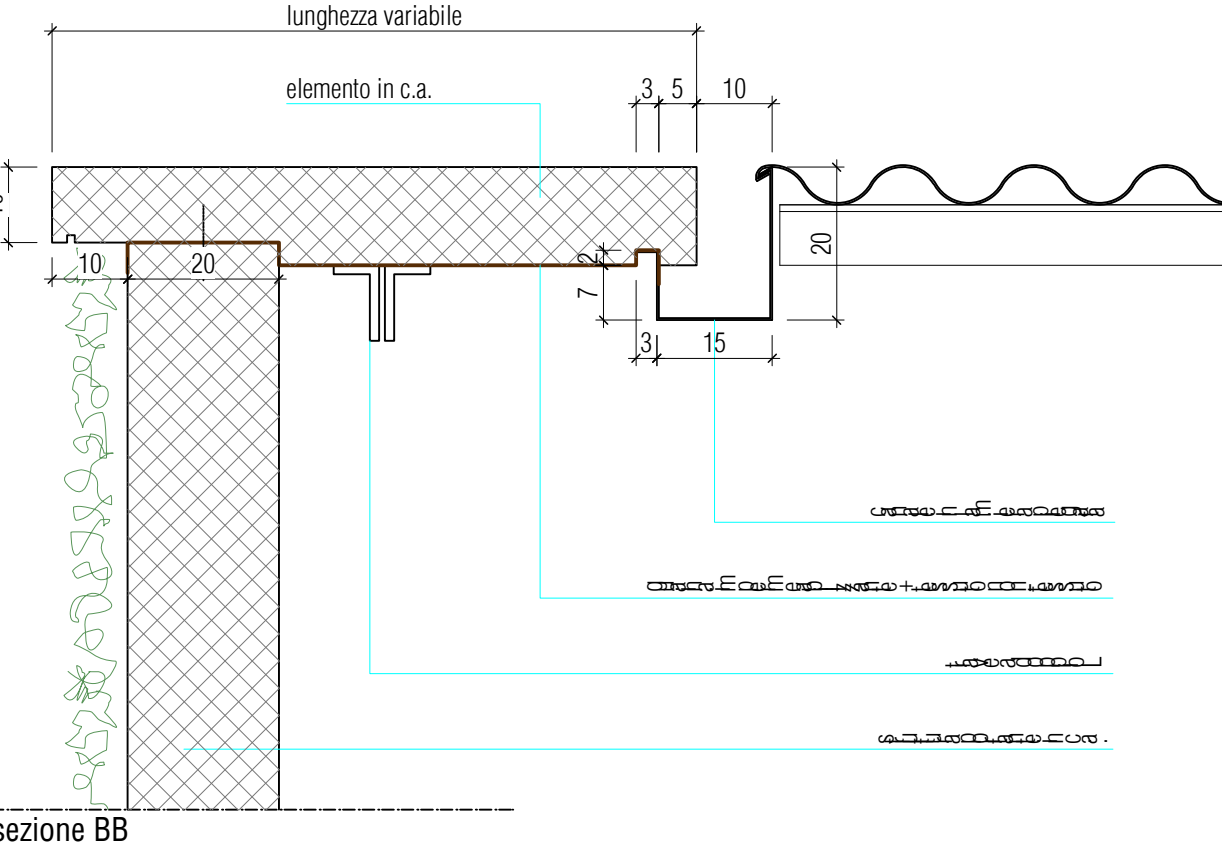
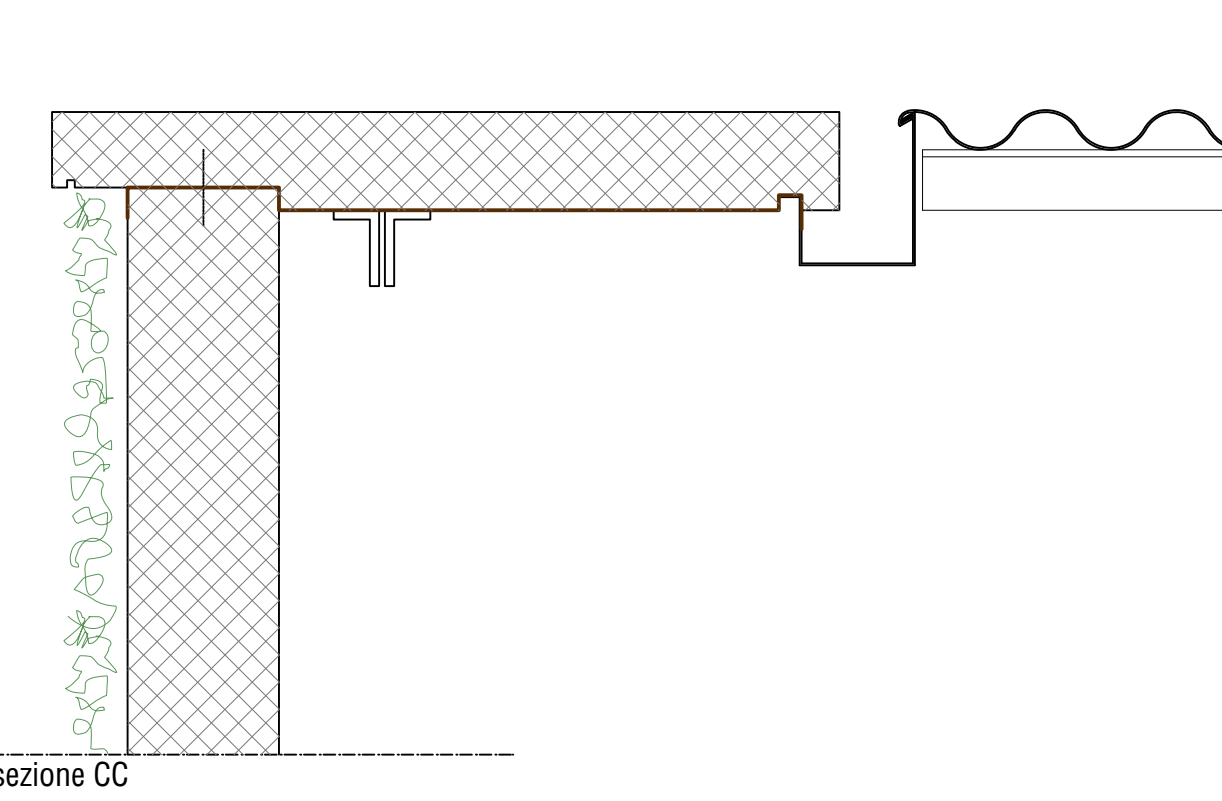
PARTICOLARI COPERTURA SALE POLIFUNZIONALI - FRONTE  
scala 1:10



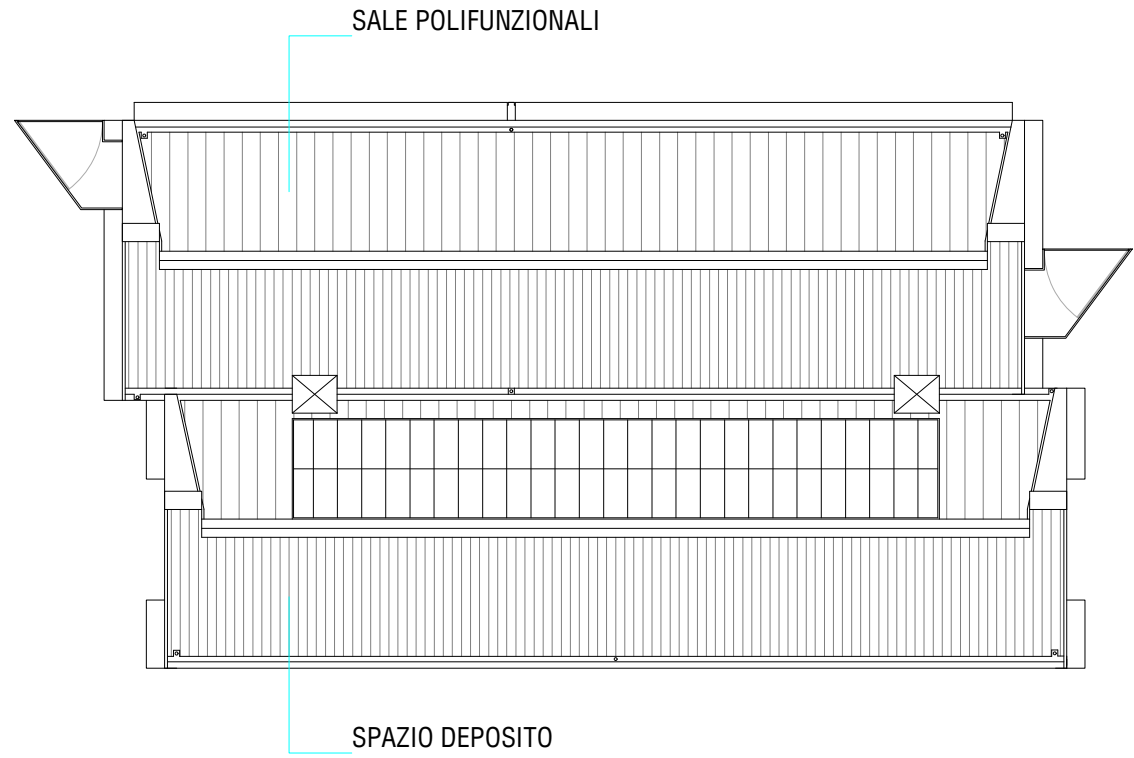
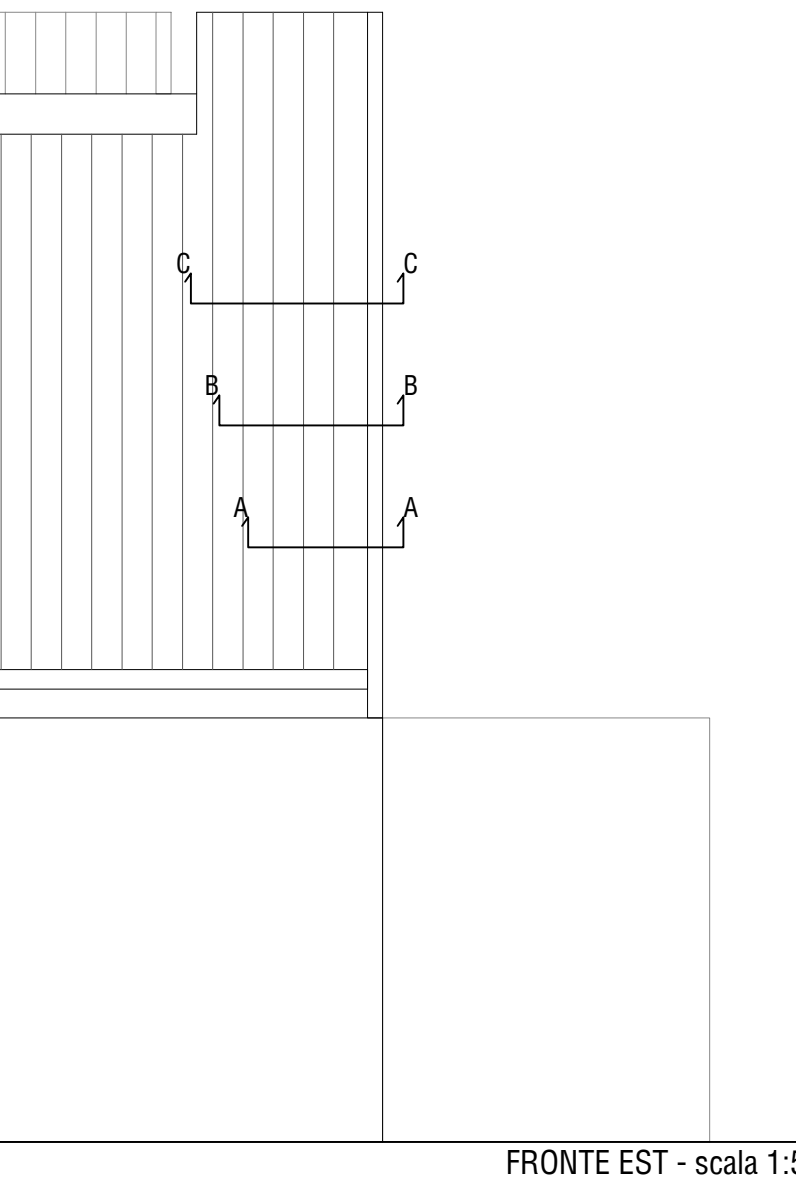
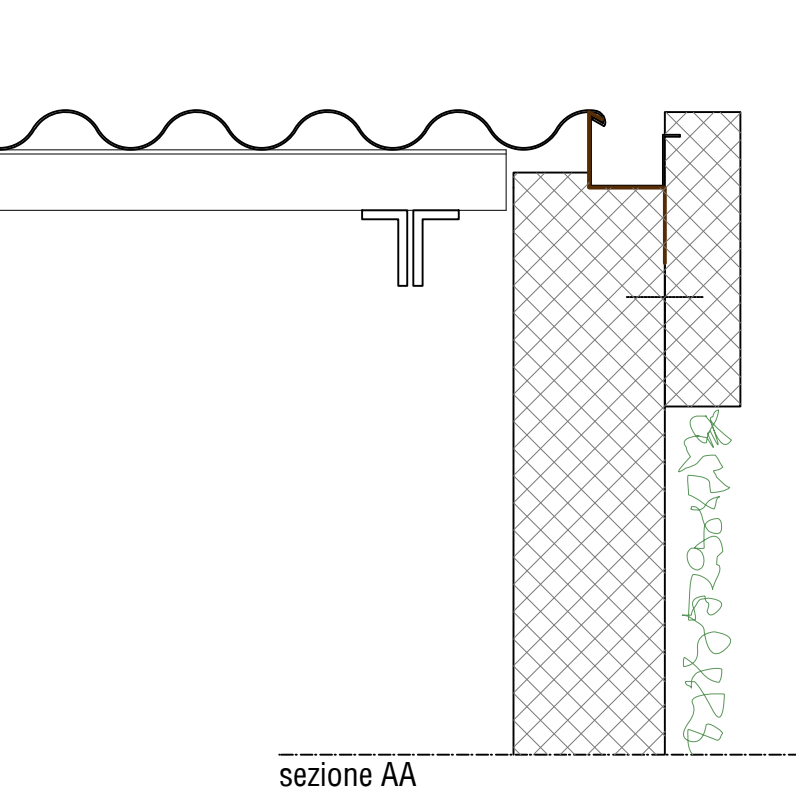
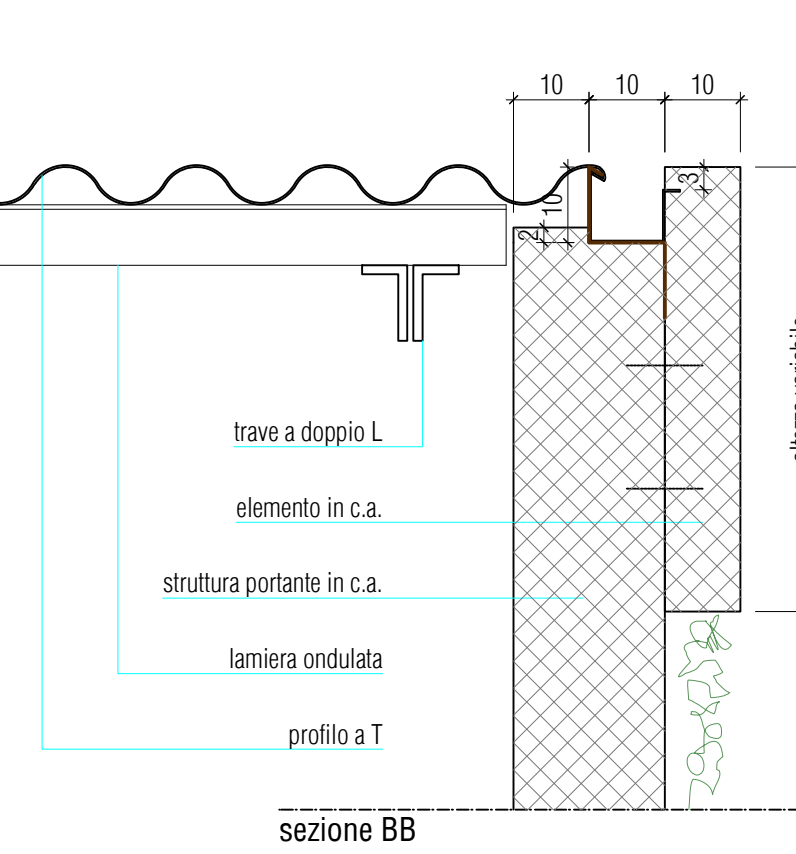
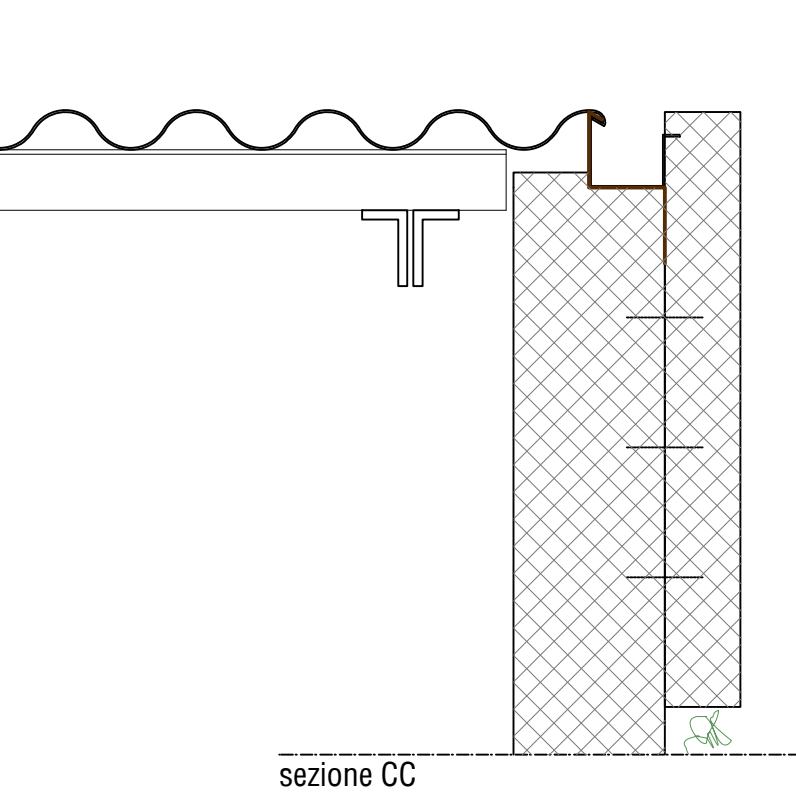
PARTICOLARI COPERTURA SALE POLIFUNZIONALI - RETRO  
scala 1:10



PARTICOLARI COPERTURA DEPOSITO IMBARCAZIONI - FRONTE  
scala 1:10



PARTICOLARI COPERTURA DEPOSITO IMBARCAZIONI - RETRO  
scala 1:10



COMUNE DI MANDELLO DEL LARIO Provincia di Lecco c.a.p. 23826 - c.f.-p.i. 00629950130 - tel.: 0341-708.111 - fax: 0341-700.337 - E-mail: info@mandellolario.it		
SALE POLIFUNZIONALI E DEPOSITO IMBARCAZIONI AL LIDO COMUNALE		TIPOLOGIA DISEGNO: ARCHITETTONICO
TITOLO: PARTICOLARI COPERTURA	SCALA: 1:10 / 1:50	TAVOLA N.: 08
LIVELLO DI PROGETTAZIONE: PROGETTO ESECUTIVO	DATA: Settembre 2008	
COMMITTENTE: COMUNE DI MANDELLO DEL LARIO Piazza Leonardo da Vinci 23826 Mandello del Lario - LC	PROGETTISTA: COMUNE DI MANDELLO DEL LARIO Piazza Leonardo da Vinci 23826 Mandello del Lario - LC	